



RECP #: 754590

RECORDED 6/5/2019 AT 3:33 PM BK# 2624 PG# 259
Debra K. Lee, CLERK OF LARAMIE COUNTY, WY PAGE 1 OF 1

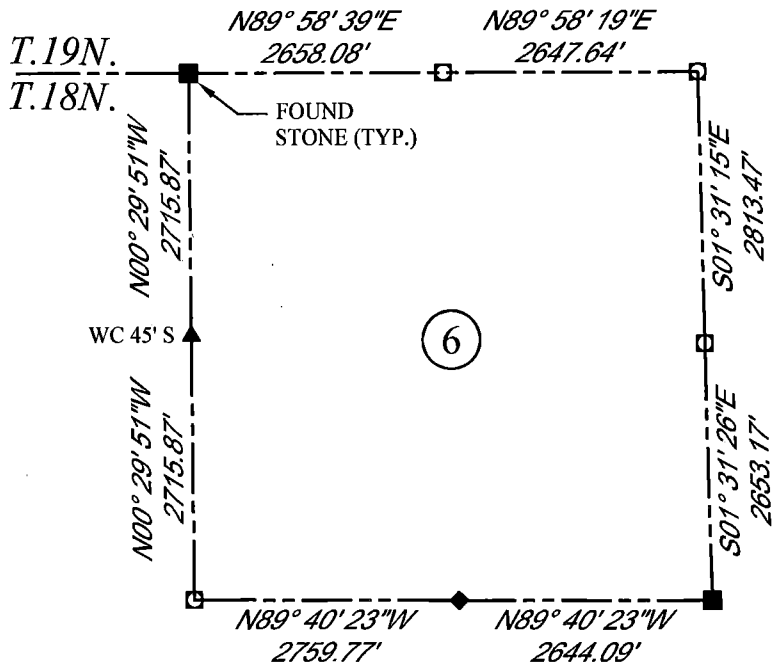
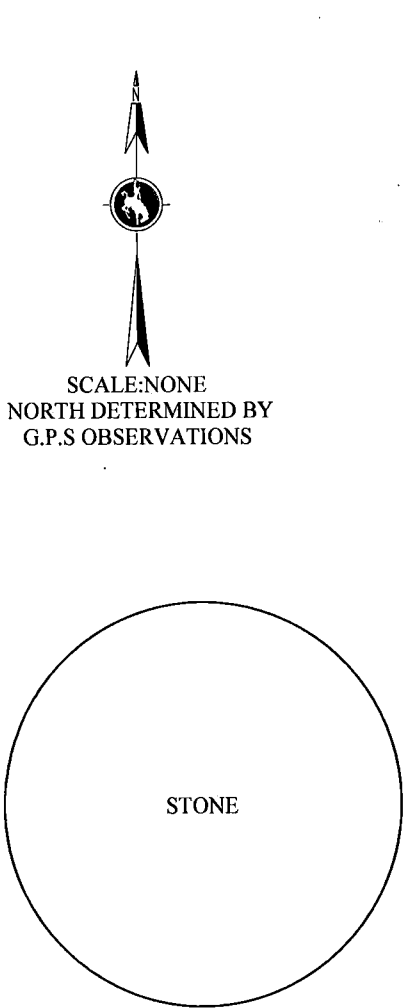
STATE OF WYOMING CORNER RECORD

(In compliance with the CORNER PERPETUATION AND FILING ACT, Wyoming Statutes, 1997 Section 33-29-140, et. seq., and the Rules and Regulations of the Board of Registrations for Professional Engineers and Professional Land Surveyors)

NORTHWEST CORNER SECTION 6, T. 18 N., R. 62 W., 6TH P.M., LARAMIE COUNTY, WYOMING

GLO: SET A GRANITE STONE 22X10X8 WITH 6 MARKS ON EACH OF THE 4 FACES SET TO THE CARDINAL POINTS. SET 15 IN. DEEP AND RAISED A MOUND OF STONES AROUND IT FOR CORNER TO TOWNSHIPS 18 AND 19 NORTH. RANGES 62 AND 63 WEST.

FOUND: FIRM SET GRANITE STONE WITH MARKINGS ON 1 FACE. ORANGE SURVEY MARKER IN FENCE LINE BY STONE.



- LEGEND:**
- FOUND BLM CAP
 - FOUND USFS CAP
 - FOUND STONE
 - FOUND PRIVATE MONUMENT
 - ◆ CALCULATED POSITION
 - ▲ SET MONUMENT (LS10245)
 - SECTION LINE

DATE OF FIELD WORK: 7/20/2018 OFFICE REFERENCE: MERIDEN

CROSS INDEX DIAGRAM

	2	3	4	5	6	7	8	9	10	11	12	13	14	15	16	17	18	19	20	21	22	23	24	25	
A																									
B																									
C	6																								
D																									
E																									
F																									
G	7																								
H																									
J																									
K																									
L	18																								
M																									
N																									
O																									
P	19																								
Q																									
R																									
S																									
T	30																								
U																									
V																									
W																									
X																									
Y	31																								
Z																									
	1	2	3	4	5	6	7	8	9	10	11	12	13	14	15	16	17	18	19	20	21	22	23	24	25

WOOD
2615 AVIATION DRIVE
SHERIDAN, WY 82801
PH: 307-675-6400

THIS CORNER RECORD WAS
PREPARED BY ME OR UNDER
MY DIRECTION AND
SUPERVISION,
SEAL AND SIGNATURE

